

Reference: Dairy Cattle

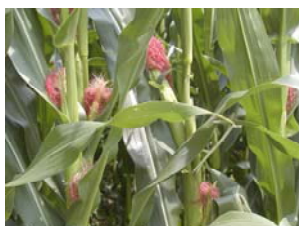
Product: Animal Biosa (silage additive)

Animal: Dairy cows, Red Danish Dairy Cattle + breeding, 8.500 kg milk

Crops: Grass, maize, beets, peas (seeding mixed with chervil, caraway, parsley, chicory in the grass fields)

Country: Denmark

Contact: lene@biosa.dk



Problem: Problems with increased cell numbers, average **390** (1.Nov.2004).

Dosage: Animal Biosa is activated for 3 weeks use at the time (2½ litre Animal Biosa/2½ litre molasses are mixed with a hand mixer). The mixture is spread over the feed every day, approximately 1 dl/cow (5 litre Animal Biosa in 3½ tons feed in the mixer wagon with straw, top beets, grain/feed concentrate e.g. minerals, ensilage - peas/maize/grass). Animal Biosa is thereby brought out on the fields through the manure (at the normal slurry distribution schedules).

Results: Immediately after starting the Animal Biosa treatments in November 2004 the cell numbers rose to over 400 (purgation) then fell to 200 in spring 2006, average **225** (1.Oct.2006). Increased feed uptake and higher yields (from **7.200 kg** 1.Nov.2004 to **8.500 kg** 1.Oct.2006, an increase of **1.300 kg** or **18%**). Fewer returns to oestrus (last party, autumn 2006, 1 of 5). Only one treatment (no repeated treatments) by mastitis. Important to note that no cows have been sat out due to increased cell numbers (they are therefore contributing to an increased cell number in the total livestock, but a “low” cell number nonetheless). The owner has great experience with acidification of full fat milk = HYGIENE and he is therefore very careful about the hygiene during the activation of Animal Biosa. He always succeeds to reach constant/good effects. The handling of the slurry has become much easier: foaming slurry runs easier into the container due to the homogenising, reduced time of mixing from 1½ to ½ **our**, reduced ammonia smell, effective decomposition of the straw/bedding (a consumption of 3 minibig/week). Consumption of manure: maize/beets 55.000 ton slurry/hectare, grass 25.000 ton slurry/hectare – no artificial fertiliser on the 2. and 3. cuttings. Positive effects from the manure on the crop with observations of a different green colour on the grass and maize. Explosive growth in the maize from the time of sowing, full maturity after 3½ months. The last beet harvest proceeded without any difficulties, as the soil has been so dry that it could carry the machines. This is because the Animal Biosa has made the soil so porous that the water can run off. Thus, the large amounts of water have not gathered on the fields (ponds) as in recent years. Harvest 2006: 10.000 FE¹ maize. 10.000 FE beets.

¹ FE = Feed unit = 7.850 KJ